

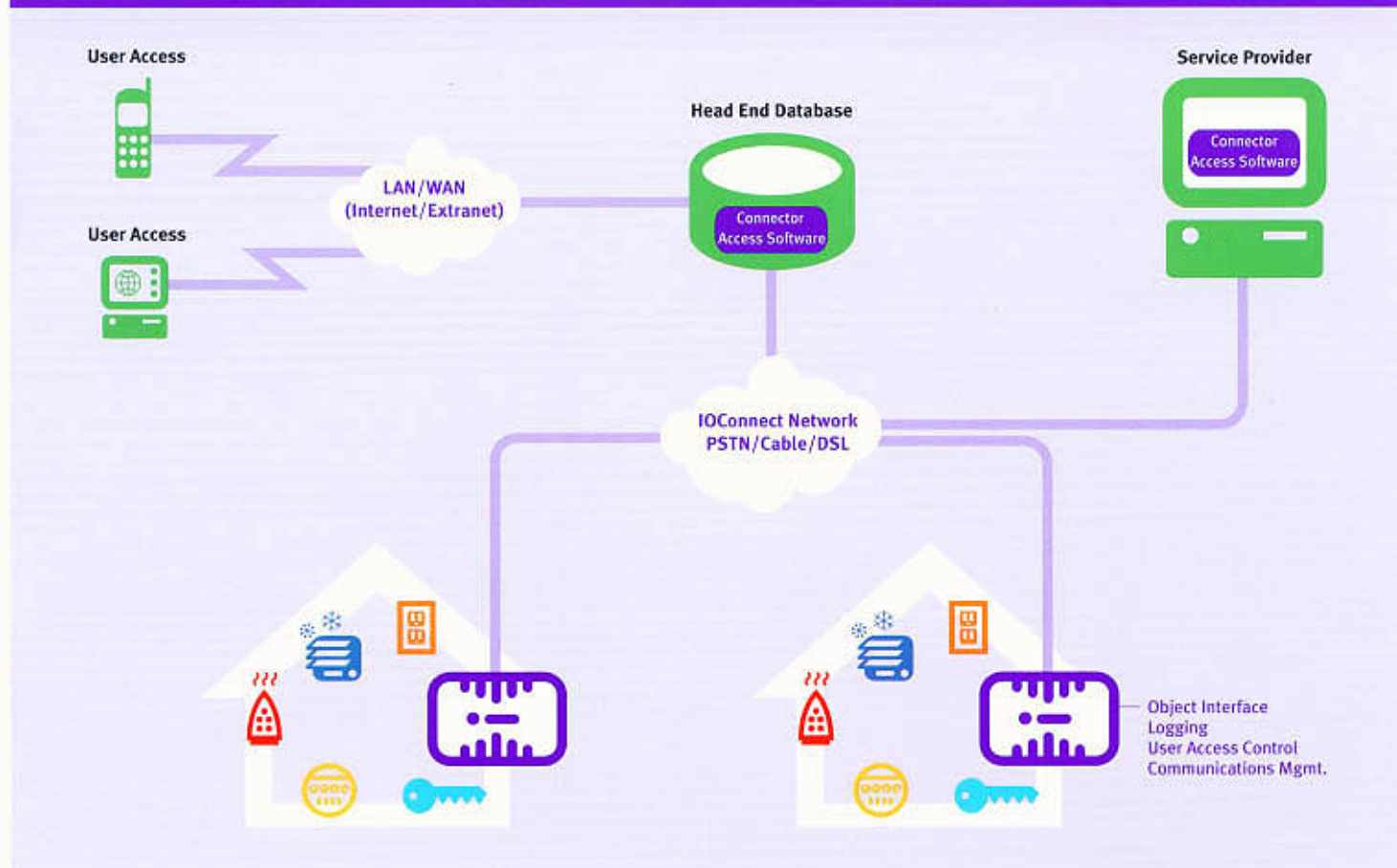
# COACTIVE CONNECTOR® 2000 SERIES



HOME GATEWAY  
TO DEVICES  
AND APPLIANCES

The Coactive Connector® 2000 Series telemetry gateway links home devices and appliances to the Internet via shared phone line or a broadband connection such as DSL or cable modem. With support for both powerline and twisted pair communications in the home, the Coactive Connector 2000 Series flexibly prepares your system for the future of home networking by enabling multiple services such as AMR, home security, energy management, and home automation. The Coactive Connector 2000 Series delivers the targeted features required for telemetry e-services including data logging, local service programs, and real-time remote monitoring and control, providing flexibility and minimizing deployment costs.

## FLEXIBLE AND SCALABLE INTERNET ACCESS TO HOME CONTROL SYSTEMS



Coactive Division  
Broadband Energy Networks

7000 Terminal Square, Upper Darby, PA 19082 \* L-S@LightMedia.com  
(610) 734-1245\* Fax (610) 734-1263 \* info@coactive.com \* <http://www.coactive.com>

### Home Networking Technology for Flexibility and Expandability

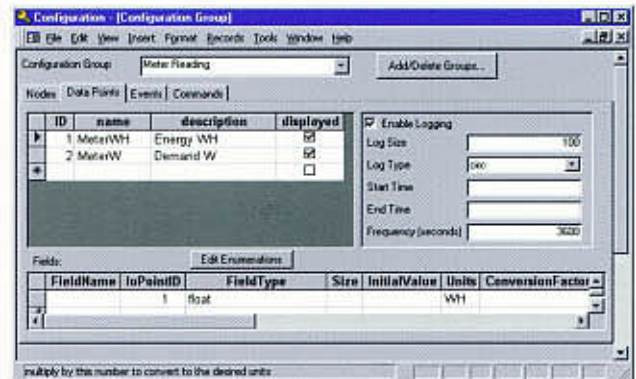
The Coactive Connector® 2000 Series provides access to a home network of control devices such as meters, security systems, and appliances over a wide-area IP connection such as PPP dial-up, cable modem, or DSL. This network connectivity approach enables you to provide multiple bundled services to the home, and gives you the flexible configuration features to extend the deployment of these services over time.

### Access Any Home Control System from Anywhere

The Coactive Connector 2000 Series is based on the unique embedded distributed object technology of Coactive's IOConnect Architecture. Distributed object technology allows any application, from databases to the Web, to access control data from anywhere on the network. This powerful technology also allows the deployment of systems scalable to millions of homes, while maintaining the robustness and performance required for telemetry applications.

### Deploy a Communications Infrastructure for the Future

In contrast to application specific approaches, the Coactive Connector 2000 Series establishes an expandable, flexible communications infrastructure based upon open standards. This infrastructure enables the services required under regulatory change, such as automatic meter reading, while providing a clear path to value-added services such as home security and home automation. This approach can help you establish new revenue streams, reduce customer churn, and gain an important foothold in the new world of home communications.



Coactive Connector 2000 service configuration

## SPECIFICATIONS

### Home Network Options

- Powerline EIA-709 (LonWorks®)
- FT-10 EIA-709 (LonWorks)
- Powerline EIA-600 (CEBus)

### Internet Access Network Options

- 10Base-T Ethernet
- 28.8 Kbps integrated modem
- 56 Kbps integrated modem
- RS-232 port to external modem

### Configuration

- RS-232 port
- Remote IP

### Communications Options

- Modem off-hook detection
- Modem caller ID

### Local Processing

- Local supervisory control
- Data logging/historical trending
- Event logging and processing
- Alarming (local and remote actions)

### Security Options

- Password protection
- Security authentication
- Encryption

### Power

- 120 or 230 VAC
- DC backup power input

### Connector Access Software

- CORBA API for Java and C++
- Configuration and management utilities
- Remote software upgrade download

Coactive Networks. Connecting Networks to the Real World.

Coactive, the Coactive Logo, Connecting Networks to the Real World, Coactive Connector, and IOConnect Architecture are trademarks or registered trademarks of Coactive Networks, Inc. in the US and other countries. LonWorks is a trademark or registered trademark of Echelon Corporation registered in the United States and other countries. All other brands and names are the property of their respective owners.

© Copyright 2001 Coactive Networks, Inc. Specifications subject to change without notice. Part # DS-CN2-006



**Coactive Division**  
**Broadband Energy Networks**

7000 Terminal Square, Upper Darby, PA 19082 \* L-S@LightMedia.com

(610) 734-1245\* Fax (610) 734-1263 \* info@coactive.com \* http://www.coactive.com